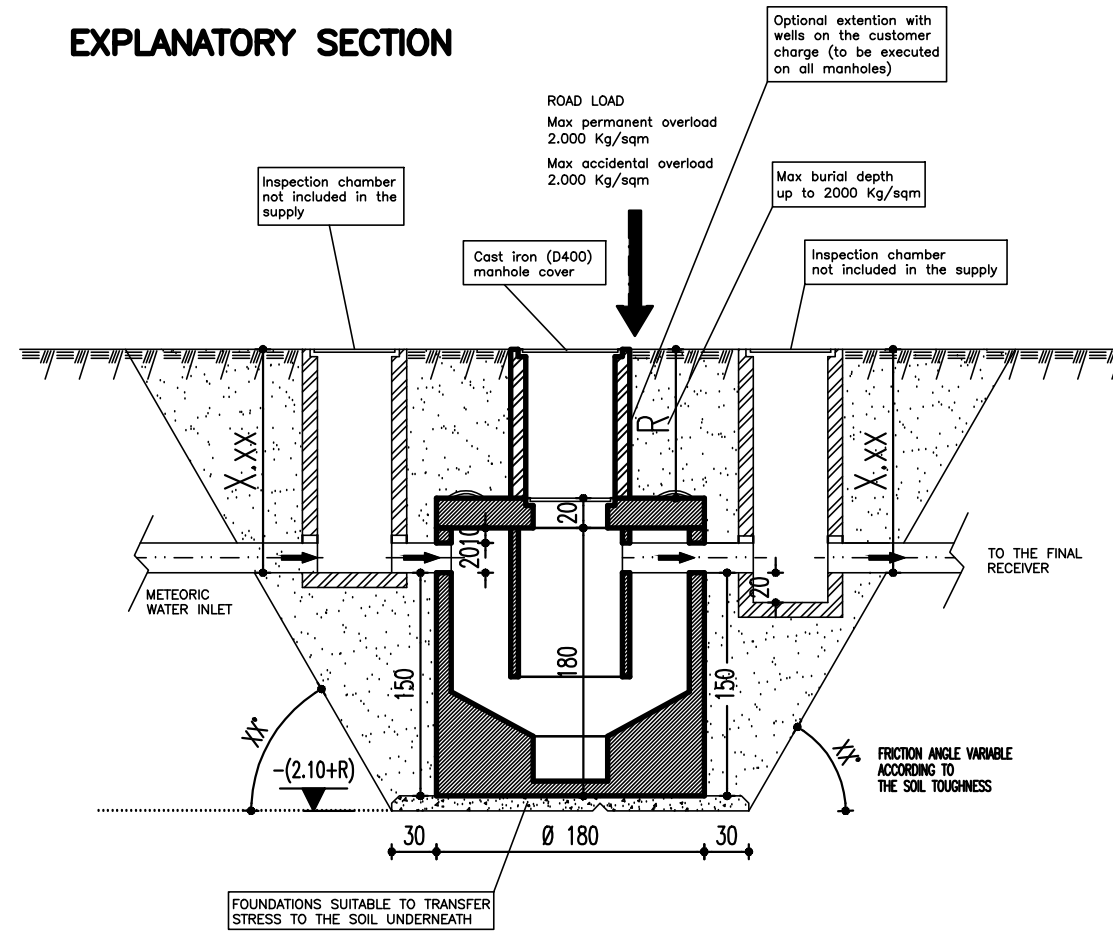


# EXPLANATORY SECTION



TOTAL HEIGHT 200 cm  
 DIAMETER 180 cm  
 TOTAL WEIGHT: 6600 Kg  
 CAPACITY 2.35 mc  
 D in : Ø 200  
 D out : Ø 200

MAX PERMANENT OVERLOAD 2,00 tons/sqm  
 MAX ACCIDENTAL OVERLOAD 2,00 tons/sqm

## DIRECTIONS

- WASTEWATER SUPPOSED ARRIVAL HEIGHT EQUAL TO -X.XX
- THE HEIGHT OF THE TANK AS WELL AS THAT ONE OF THE DRAINAGE WELL VARY TO THE SAME EXTENT OF THE WASTEWATER ARRIVAL HEIGHT
- 0.00 HEIGHT MUST BE CONSIDERED AS RELATED TO THE SIZE OF THE DESIGN CHART ALONGSIDE
- BOTH INLET AND OUTLET PVC PIPES, AS SHOWN BY THE DESIGN CHART ALONGSIDE, ARE ON THE CUSTOMER CHARGE
- THE EXTENT OF EXCAVATION EXCEEDS BY 30 CM THE PLANT SIZE
- INLET AND OUTLET PVC CONNECTION PIPES ARE ON THE CUSTOMER CHARGE
- FOUNDATIONS MUST BE BACKFILLED BY SAND AND STONES
- THE FACILITIES MUST BE TOTALLY BURIED. THE INSTALLATION HAS TO GUARANTEE FLOATING AND SEDIMENTED MATERIALS TO BE PERIODICALLY REMOVED. IT IS WORTHWHILE TO ASK FOR SPECIALIZED ASSISTANCE TO CHOOSE THE MOST SUITABLE BURIAL OPTION FOR THE TANK
- MAX BURIAL DEPTH HAS TO BE ASSESSED ACCORDING TO 2000 KG/SQM MAXIMUM PERMANENT OVERLOAD
- IT IS RECOMMENDED THAT THE CUSTOMER ASKS FOR QUALIFIED TECHNICAL SUPPORT TO KNOW ABOUT THE STANDARDS REQUIRED TO ALLOW BOTH CARRIAGEABLE AND PEDESTRIAN USE OF THE PLANT'S COVER AREA. PAY ATTENTION PLEASE TO LAW RESTRICTIONS ABOUT DISTANCES FROM BOTH THE DRINKING WATER SUPPLY PIPES AND THE FOUNDATIONS WALLS. THE TANK CAN'T BE BURIED IN LANDSLIDE-SUBJECTED OR SLOPING AREAS IN THE WHICH CASE IT IS CONVENIENT TO HEAR THE VIEW OF A GEOLOGIST OR OTHER SPECIALIST WHO KNOWS ABOUT THE AREA HYDROLOGICAL AND MORPHOLOGICAL CHARACTERISTICS. HOWEVER, WHETHER THE ACTUAL LOAD EXCEEDS THE EXPECTED ONE, A FURTHER PROTECTION STRUCTURE HAS TO BE ARRANGED ACCORDING TO THE APPOINTED TECHNICIAN CALCULATIONS. IN PRESENCE OF GROUNDWATER, THE APPOINTED TECHNICIAN HAS TO ARRANGE SUITABLE MEASURES (ANCHORING AND BLOCKING) TO PREVENT THE WATER FROM LIFTING UP THE PLANT OVER TIME
- IT IS RECOMMENDED THAT THE CUSTOMER ARRANGES A BYPASS PIPE TO HANDLE FLOW-RATES EXCEEDING THE EXPECTED ONE.

## MOVEMENT AND LOAD



Products main features

Cylindrical DEPOIL PC is a reinforced concrete facility whose capacity vary from 5000 liters (PC20A model) to 7600 liters (PC70A model).

### Movement

To move DEPOIL PC it is strictly required to lift it by 4 (four) slings or chains or ropes or hooks – as long as their capacity exceeds 3000 kg – tied to 4 hooks which the plant is provided with. The plant's cover is leaning on the below structure. During the lifting, both of them make one piece only (see picture nr. 1). Whatever movement of DEPOIL PC requires the plant to be empty

### WARNING:

Keep the load balanced and move the plant just if empty  
 An example of the correct way to move the plant is available from the picture here alongside.

### LOADING ONTO TRUCKS

Overhead type loaders as well as cranes and any other lifting facilities can suit the purpose of moving the plant as long as they have the lifting capacity required from the plant technical specifications and ropes or chains are tied up to the plant hooks.

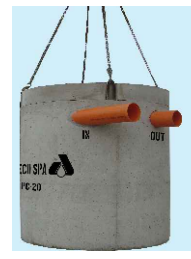
Loading onto trucks must be carried out from top. Despite the fact that the facility is exceptionally strong and shock resistant, it is recommended to prevent it from beating against blunt objects or sharp edges during loading operations and transportation, because damages may occur even though they may be invisible to the naked eye. Furthermore, during the transportation, it is recommended to block the facility by slings.

### STORAGE

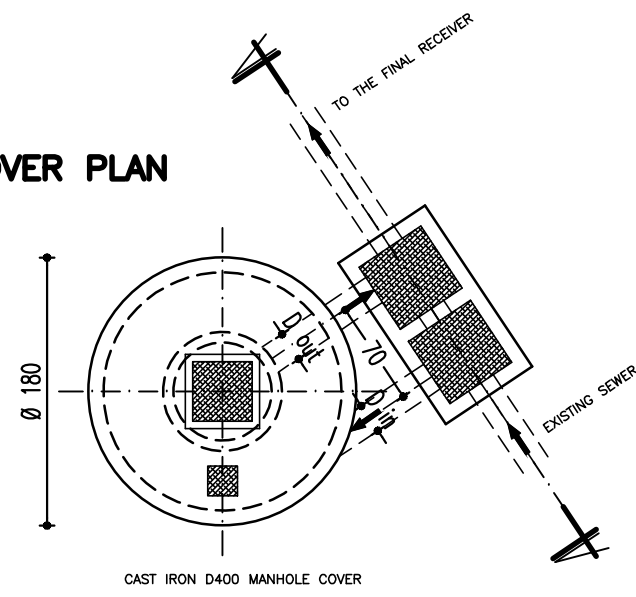
The facility can be stored in the open as long as the surface which it is leaned on is flat and roughness-free because unexpected sharp edges may damage to it.  
 During any movement or transportation it is not recommended to drag the tank in order to prevent scratches and damages. Remember that the facility can be moved just if empty.

### WARNING

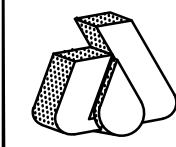
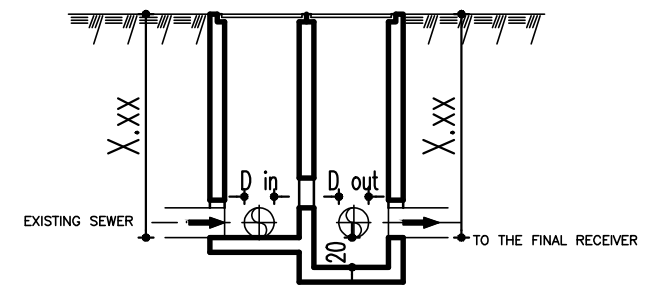
Before proceeding to the plant burial it is recommended to prior make sure that the facility is vertically positioned and the manholes are perpendicular to the ground. For the plant burial, it is recommended to ask for the assistance of a specialized technician and to check the plant-related instructions manual.



## COVER PLAN



## WELLS PLAN



# DEPURECO SpA

BARI Via M. MITOLO n. 13  
 Tel. 080/501.09.44 PBX – Fax 080/502.36.22  
 e-mail: info@depureco.it Internet: www.depureco.it  
 Azienda certificata ISO 9001 / 08

THIS DESIGN AND INFORMATION CONTAINED HEREIN ARE THE PROPERTY OF DEPURECO SpA. IT'S FORBIDDEN COPYING, REPRODUCTION AND CIRCULATION WITHOUT THE WRITTEN PERMISSION OF DEPURECO SpA

## PROGETTO

PLANT FOR THE TREATMENT OF METEORIC WATER  
 DEPOIL PC20A

DATA 13/09/2016	DISEGNO AMBRIOLA
RIFERIMENTO PC20A-DEPL	CONTROLLO --